



# SERVICED OFFICES & COWORKING SPACE

20TH FLOOR  
CYBER SIGMA  
FORT BONIFACIO, TAGUIG







## CYBER SIGMA

Owned and developed by Robinson's Land Corporation, the Cyber Sigma Building is a 20-Storey, Class A Office Building located along Lawton Ave. in Fort Bonifacio, Taguig City.

**Building Grade:** Class A

**Gross Floor Area:** 85,000 sq. m.

**Gross Leasable Area:** 42,660 sq. m.

**No. of Floors:** 14 Office Floors

**Floor-to-Ceiling Height:** 2.8 m

**Handover Condition:** Warm Shell

**Podium Parking Levels:** 5

**Commercial/Retail Levels:** 2

**Basement Level:** 1

**Typical Floor Plate:** 3,408.05 sq. m.

**Owner/Developer:** Robinsons Land Corporation

### Building Features

- N + 1 backup power
- 24/7 Variable Refrigerant Flow(VRF) air conditioning system
- Safety and Fire Protection System
- CCTV Surveillance, 24/7 Security, Building Management System

## CLOSER TO EVERYTHING

Major establishments surround the Cyber Sigma Building. Aside from other office buildings found in the neighboring Townships of McKinley Hill and McKinley West, residential buildings, schools, entertainment centers and transportation hubs are widely available in the area.









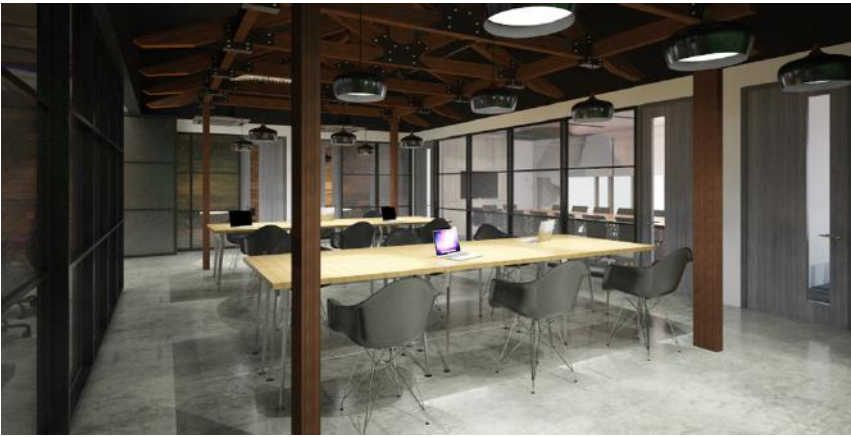
Located at the 20th Floor, the KMC Serviced Office and Coworking Space is vastly comprised of medium and large sized private offices **built for teams of 20 to 200 employees.**

Approximately **3,400 square meters**, the KMC Cyber Sigma Office is the company's largest flexible office in the country to date.



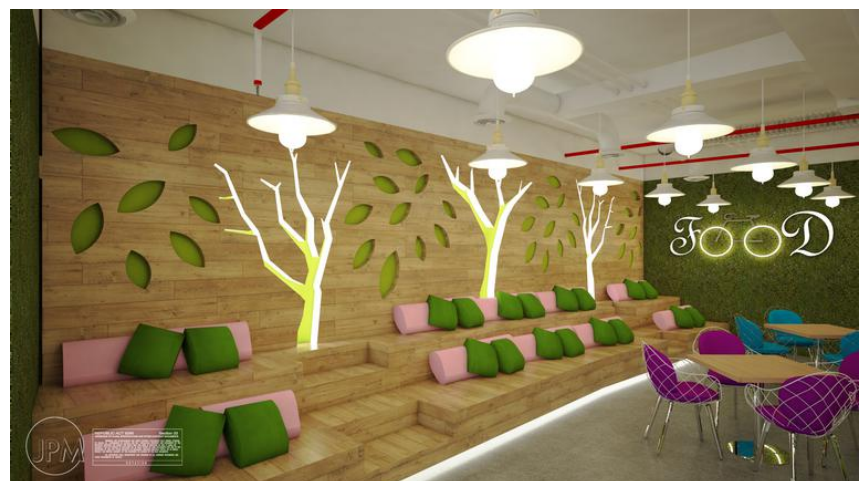
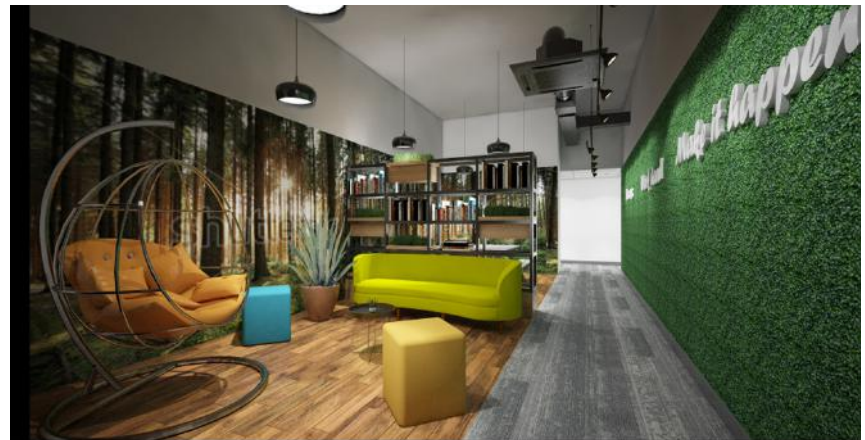
All offices come fully functional with **24/7 Internet High-speed Internet Access, IT Service, and Biometric Security.**

An exclusive feature for large offices is the inclusion of a Manager's Cabin and a Private Meeting Room.



## NATURE AND BUSINESS CONVERGE

The design of the KMC Cyber Sigma Office gives the hi-tech facility a natural outdoor feel— contrasting the urban setting of the office and its surrounding establishments. Amenities such as the Huddle Areas and Pantry are outfitted with Nature-themed artwork and color scheme. The office's theme is designed to create a relaxing atmosphere for those in search of a quick break from work.





# FACILITIES

- Private Offices
- Co-working Spaces
- Meeting Rooms
- Training Rooms
- Male and Female Sleeping Quarters
- Hub Rooms
- Clinic
- Pantry Area
- Huddle Area
- IT Help Bar



**KMC**  
SOLUTIONS

PEOPLE  
PLACES  
PROCESSES

25th Floor Picadilly Star Bldg., 4th Ave., Cor., 27th  
Street, Bonifacio Global City, Taguig 1634, Philippines.

[kmcsolutions.us](http://kmcsolutions.us) | (+632) 7796540 | [info@kmc.solutions](mailto:info@kmc.solutions)